



BY PRO-JECT AUDIO SYSTEMS

INSTRUCTIONS FOR USE Pro-Ject Phono Box S2

Dear music lover,

thank you for purchasing a Pro-Ject Audio Systems phono amplifier.

In order to achieve maximum performance and reliability you should study these instructions for use carefully.



Warning of a hazard for the user, the unit or possible misuse.



Important notice.

Safety instructions

AC outlet voltages vary from country to country. Before connecting to the mains, make sure that the voltage in your area meets the voltage requirements printed on the power supply.



The power supply is used to disconnect the unit from the mains. Make sure that the power supply is easily accessible at all times. Never handle the device, the power supply while your hands are wet or damp.

Avoid letting liquids enter the device or the power supply. Never place any item containing liquid, such as a flower vase on or near the device. Never spill any liquid on the device or the power supply. Never place any naked flame sources, such as lighted candles on or near the device. The product shall not be used in damp or wet locations, next to a bathtub, sink, swimming pool or any other similar conditions.

Settings

Use the dip switches at the bottom of the unit to set input gain, input capacitance and input impedance. Please set both channels equally.

To find out which type your cartridge is please consult the literature accompanying your cartridge.

The literature for cartridges should also specify the correct input impedance (low-output MC cartridges) and the correct input capacitance (high-output MC and MM cartridges), into which the cartridge is designed to work. If in doubt please consult your dealer.

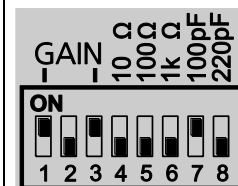


To alter settings the unit must be disconnected from the power supply and the amplifier.

Examples of typical settings

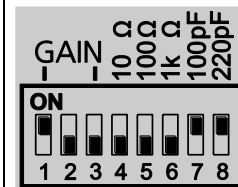
Ortofon 2M Red (MM)

input gain 40dB, input capacitance 200pF, input impedance 47kohms



Ortofon X5-MC (High-Output MC)

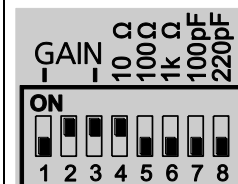
input gain 43dB, input capacitance 420pF, input impedance 47kohms



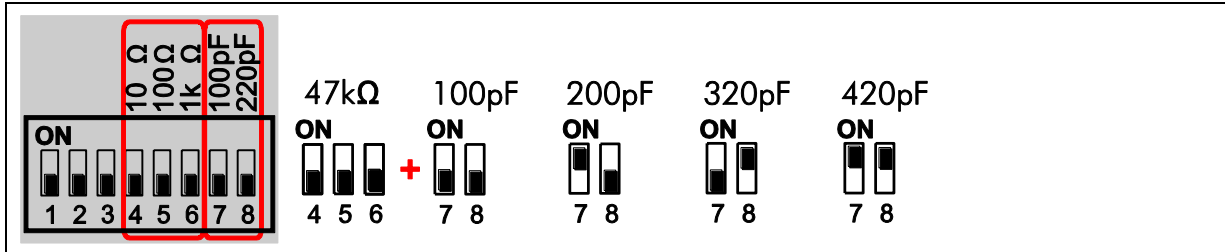
Ortofon Rondo Red (Low-Output MC)

input gain 60dB, input capacitance *, input impedance 10ohms.

* Input capacitance is irrelevant for low-output MC cartridges

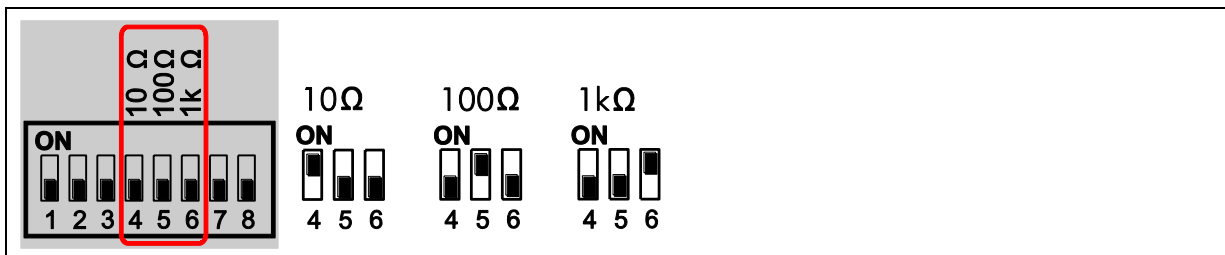


Input impedance / input capacitance – high-output MC and MM cartridges

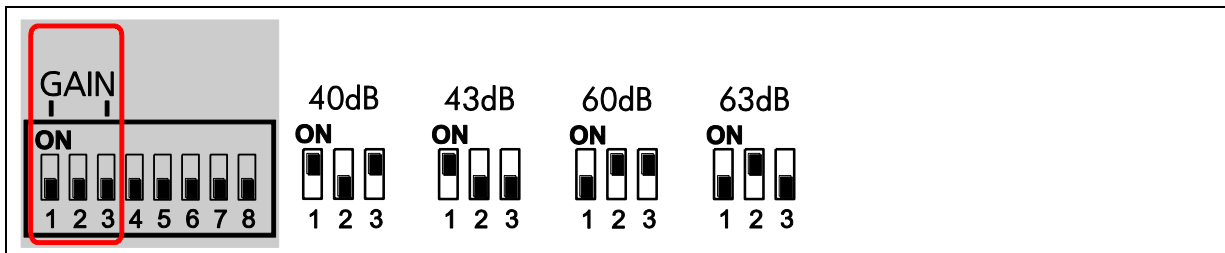


Input impedance – low-output MC cartridges

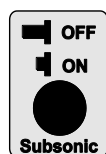
* Input capacitance is irrelevant for low-output MC cartridges



Input gain

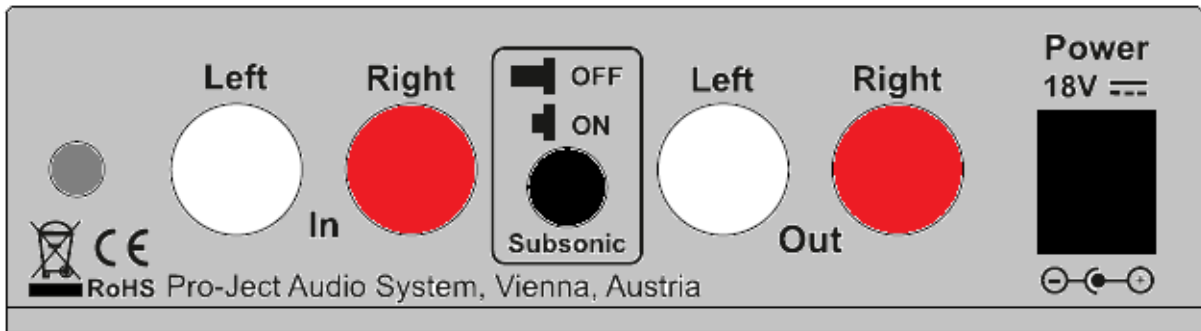


Subsonic filter



A switch at the back of the phono amplifier activates and deactivates the subsonic filter.

Connectors



Make all connections whilst the phono amplifier is disconnected from the power supply.

Take care to connect the left and right channels correctly. The right channel is usually marked red, the left channel black or white.



Do not connect the phono amplifiers output to a phono input (sometimes labelled **gram**, **disc** or **RIAA**) on the amplifier.

Never use any other power supply than the one supplied with the unit.

Connecting the record player

Connect the tonearm signal lead to the **In** of the phono amplifier. The earthing wire may be connected to the screw terminal if you encounter hum problems when using the record player.

Connection to the amplifier

Connect the **Out** of the phono amplifier to a line input (such as **AUX**, **CD**, **Tuner**, **Tape** or **Video**) on your amplifier.

Mains power connection

Connect the low voltage plug from the power supply to the **Power 18V DC** socket of the phono amplifier before connecting the power supply to the mains.

Stand-By

The button on the front panel of the unit alternately turns the power on or returns it to standby mode. The blue LED above the stand-by push button shows that the unit is switched on.

Technical specifications Pro-Ject Phono Box S2

^A Typical for low output MC cartridges, ^B typical for MM or high output MC cartridges

* Input capacitance is irrelevant for low-output MC cartridges

Input impedance:	10ohms, 100ohms, 1kohm ^A
Input capacitance/impedance:	100pF, 200pF, 320pF and 420pF */47kohms ^B Together with other input impedance settings without any influence!
Input gain:	40 and 43dB ^B / 60 and 63dB ^A
Noise floor:	94dB (A weighted) at 40dB and 43dB input gain 75dB (A weighted) at 60dB and 63dB input gain
THD:	<0,01% at 40dB and 43dB input gain <0,05% at 60dB and 63dB input gain
RIAA-equalisation curve accuracy:	20Hz - 20kHz / max. 0,4dB
Subsonic filter:	at 20Hz with 12dB/octave
Input:	1 pair RCA/phono sockets
Line-level output:	1 pair RCA/phono sockets
Outboard power supply:	18V/500mA DC, suitable for your country's mains supply
Power consumption:	85mA DC, <1W in standby
Dimensions W x H x D (D with sockets):	119 x 37 x 103 (113)mm
Weight:	340g without power supply

Potential incorrect use and fault conditions

No signal on one or both channels:

No connection between player and phono amplifier or amplifier. This could be due to a faulty plug, broken wire or solder joint or simply loose plug/socket connection.

Strong hum:

No earth connection from cartridge or arm, or arm cable to phono amplifier, or earth loop.

Output too quiet or too loud, or distorted:

Input gain incorrectly set - input overloading or insufficiently amplified.

Service

Should you encounter a problem which you are not able to alleviate or identify, please contact your dealer for further advice. Only if the problem cannot be resolved there, the unit should be sent to the responsible distributor in your country.

Warranty



The manufacturer accepts no responsibility for damage caused by not adhering to these instructions for use. Modification or changes to any part of the product by unauthorized persons release the manufacturer from any liability over and above the lawful rights of the customer.

Copyright, trademarks

Pro-Ject Audio Systems is a registered Trademark of H. Lichtenegger.

This guide was produced by: Pro-Ject Audio Systems
Copyright © 2017. All rights reserved.

The information was correct at the time of going to press. The manufacturer reserves the right to make changes to the technical specification without prior notice as deemed necessary to uphold the ongoing process of technical development.